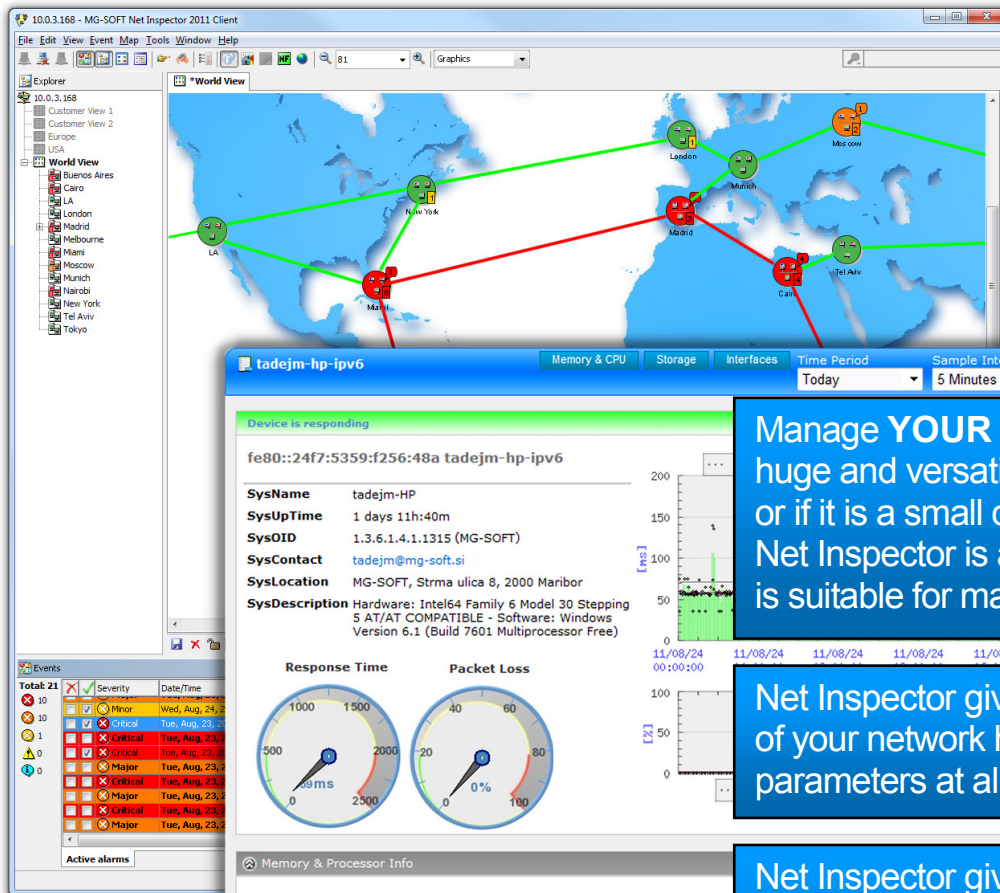


MG-SOFT Net Inspector

Fault and Performance Manager

[Home](#)[Devices](#)[Alarms](#)[NetFlow](#)[IPSLA](#)[Reports](#)

Manage **YOUR** network, no matter if it is a huge and versatile telecommunications network or if it is a small or large corporate network. Net Inspector is a totally scalable system and it is suitable for managing networks of any size.

Net Inspector gives you a complete overview of your network health, usage and performance parameters at all times.

Net Inspector gives you a full insight into who and how is using your network resources and bandwidth.

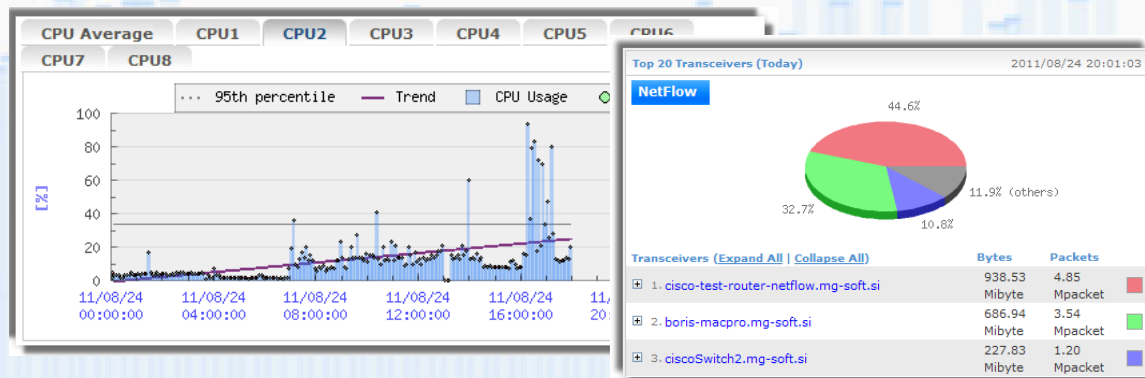
Net Inspector helps you to identify bottlenecks and to eliminate potential problems before they start damaging your network performance.

MASTER YOUR NETWORK HEALTH AND PERFORMANCE WITH EXCELLENCE

- ❑ MG-SOFT Net Inspector continuously monitors the health and status of network nodes, network performance, network resources and network services. The system shows to network operators and supervisors all current and vital real-time information on the state of the network performance as well as history charts with trend lines.
- ❑ The software lets you detect bottlenecks and potential problems before they happen and immediately alarms you of faults and other significant events when they do occur.
- ❑ Intuitive visualization of the network and alarms allows you to easily spot the problem, determine the cause of the problem and minimize the needed time-to-cure the problem.
- ❑ By supporting distributed management, Net Inspector's capacity can grow to perfectly cover your network monitoring needs, either in small or medium-sized networks or in large corporate or telecommunications networks containing a multitude of devices from different vendors.
- ❑ With over fifteen years of product development and maintenance and its usage in major IT and telecommunications companies you can be confident that Net Inspector will effectively manage also your network.

MG-SOFT NET INSPECTOR – BASIC FACTS

- ❑ Quick and straightforward installation and configuration of the Net Inspector system.
- ❑ Complete solution for Fault and Performance Management (ITU X.733 – compliant).
- ❑ Client/Server architecture using distributed Server mechanism (remote polling engines).
- ❑ High availability (Server can run in clusters) and scalability of the system.
- ❑ Open architecture enables seamless integration into higher-level management systems (OSS), ticketing systems or inventory systems via SNMP protocol, through Web services (WSDL/SOAP) interface or through scripting command line interfaces.
- ❑ Hybrid Java/WEB Client employs Java Web-Start method for launching the Client by downloading it from Net Inspector Server (software needs to be installed only on Server's host).



MG-SOFT NET INSPECTOR - MAIN FEATURES

- ❑ Automatically discovers, displays and updates network topology (layer 2 and layer 3), including innovative network visualization with drill-down map navigation capabilities.
- ❑ Actively polls devices using ICMP Ping and SNMPv1/v2c/v3 protocols, and receives event notification messages (SNMP Trap and Inform notifications) on IPv4 and IPv6 networks.
- ❑ Monitors most of the well-known network services (HTTP, HTTPS, FTP, DNS, SMTP, IMAP, IMAPS, POP3, SSH, Telnet, NNTP, NNTPS, LDAP,...).
- ❑ Monitors IP SLA statistics, including HTTP, FTP, TCP, DNS and VoIP Quality-Of-Service metrics (e.g., MOS, jitter, latency, packet loss, etc.) on Cisco routers.
- ❑ Collects and analyzes NetFlow packets and provides detailed IP traffic statistics.
- ❑ Out-of-the box monitoring of performance statistics (CPU, memory, storage, running processes and running services/daemons) on servers, workstations and Cisco devices.
- ❑ Out-of-the box monitoring of device availability, network latency and packet loss.
- ❑ Vendor-independent device monitoring, support for private MIBs (MIB compiler included) and enterprise specific SNMP Traps (trap-to-alarm rules configuration utility).
- ❑ Provides advanced alarm management features (propagation, filtering, searching, acknowledging, clearing, commenting, etc.).
- ❑ Performs actions on alarms: sends E-mail, sends SMS, starts external applications or scripts.
- ❑ User configurable alarm thresholds both for built-in as well as for custom metrics.
- ❑ Comprehensive graphs and tables presenting device performance information.
- ❑ Reports and exporting data capabilities to CVS, HTML and PDF files.
- ❑ Integrated tools for operator's convenience: ICMP Ping, Trace-Route and MIB Browser Console.
- ❑ Starting user-defined commands on monitored objects (i.e. dedicated element manager, telnet,...).
- ❑ User Views for assigning user-based access control and for defining different management domains.
- ❑ Stores alarms and performance history in SQL database.
- ❑ Broad platform support (Server runs on Linux or Windows OSes, Client runs on Java JRE platforms).
- ❑ For more information on MG-SOFT Net Inspector please visit <http://www.mg-soft.si/netinsp.html>



MG-SOFT d.o.o., Strma ulica 8, SI-2000 Maribor, Slovenia

+386 2 2506565 +386 2 2506566 info@mg-soft.si <http://www.mg-soft.si>